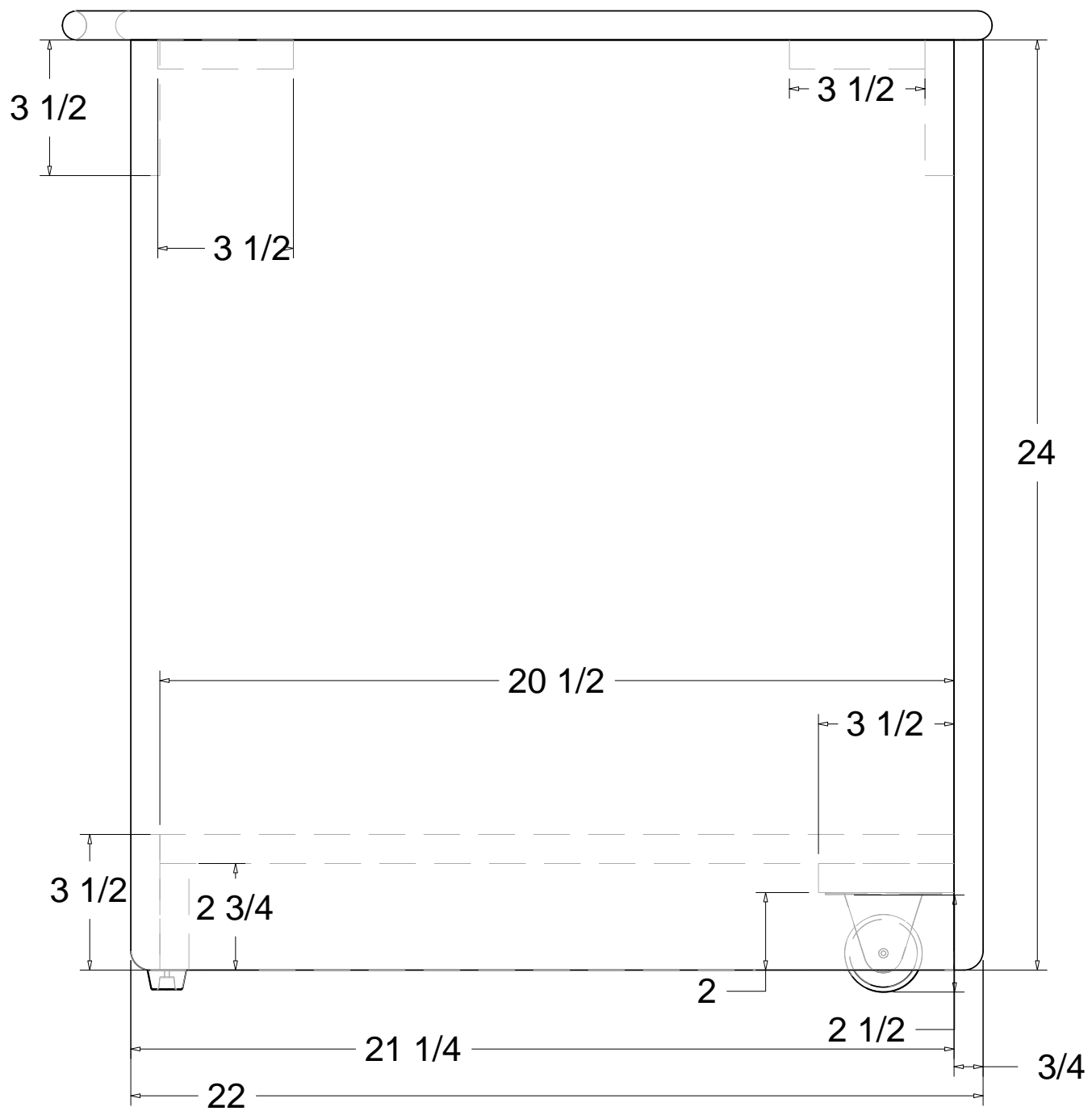
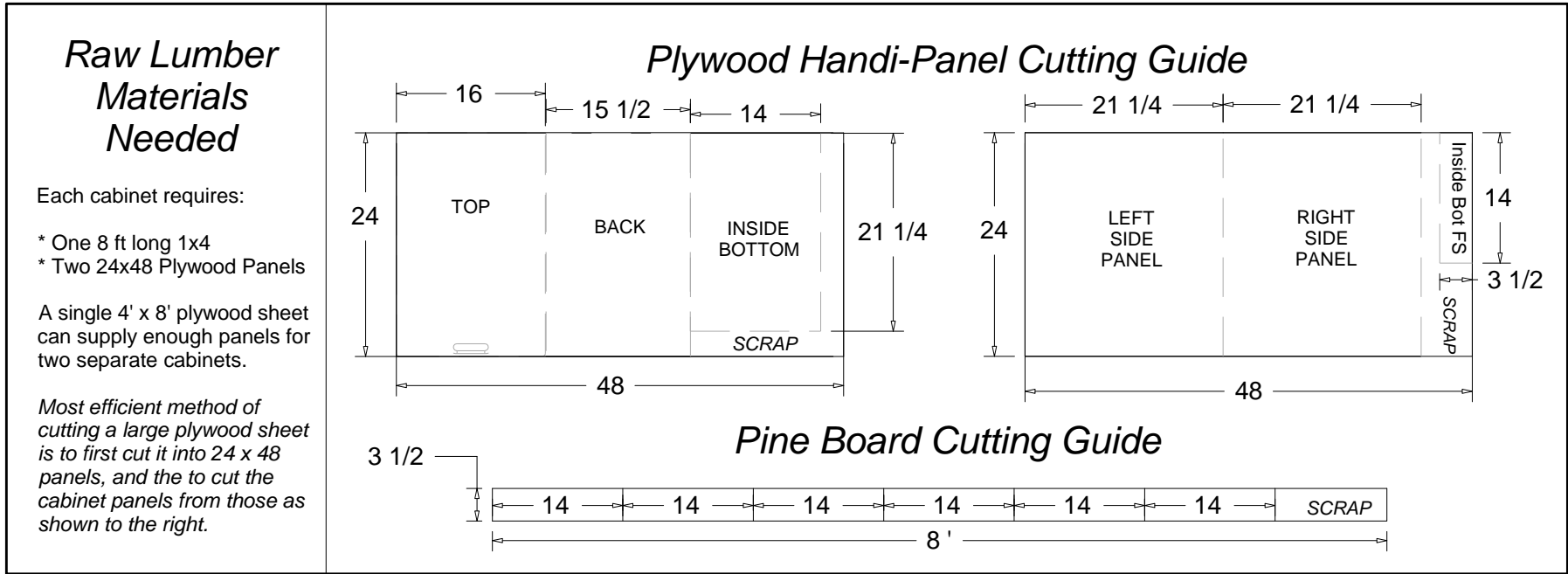


Mobile Tool Base Cabinet

Item Number	Quantity	Part Name	Comment / Dimension / Description
1	1	Cabinet Top	3/4" Plywood, 16" W x 24" L
2	1	Cabinet Back	3/4" or 1/2" Plywood, 15-1/2" W x 24" L
8	1	Cabinet Left Side	3/4" Plywood, 21 1/4" W x 24" H
9	1	Cabinet Right Side	(Identical to Left, with different edges rounded)
7	1	Cabinet Inside Bottom	3/4" Plywood, 14" W x 21-1/2" L
3	1	Vertical Support	3/4" Pine Board, 3-1/2" W x 14" L
4	2	Vertical Support / Faceboard	(Identical to Vertical Support, with bottom edge rounded)
6	3	Horizontal Support/ Top Brace	3/4" Pine Board, 3-1/2" H x 14" L
5	1	Inside Bottom Front Support	3/4" Pine Board (or from the "SCRAP" Plywood), 2-3/4" W x 14" L
10	2	Caster Wheel	2" Fixed Caster, 2-1/2" total height w bracket
11	2	Bumper	Plain 1/2" High Rubber Bumper.
12		Glue, Biscuits, Wood Screws	As needed (Depending on Assembly Preferences)



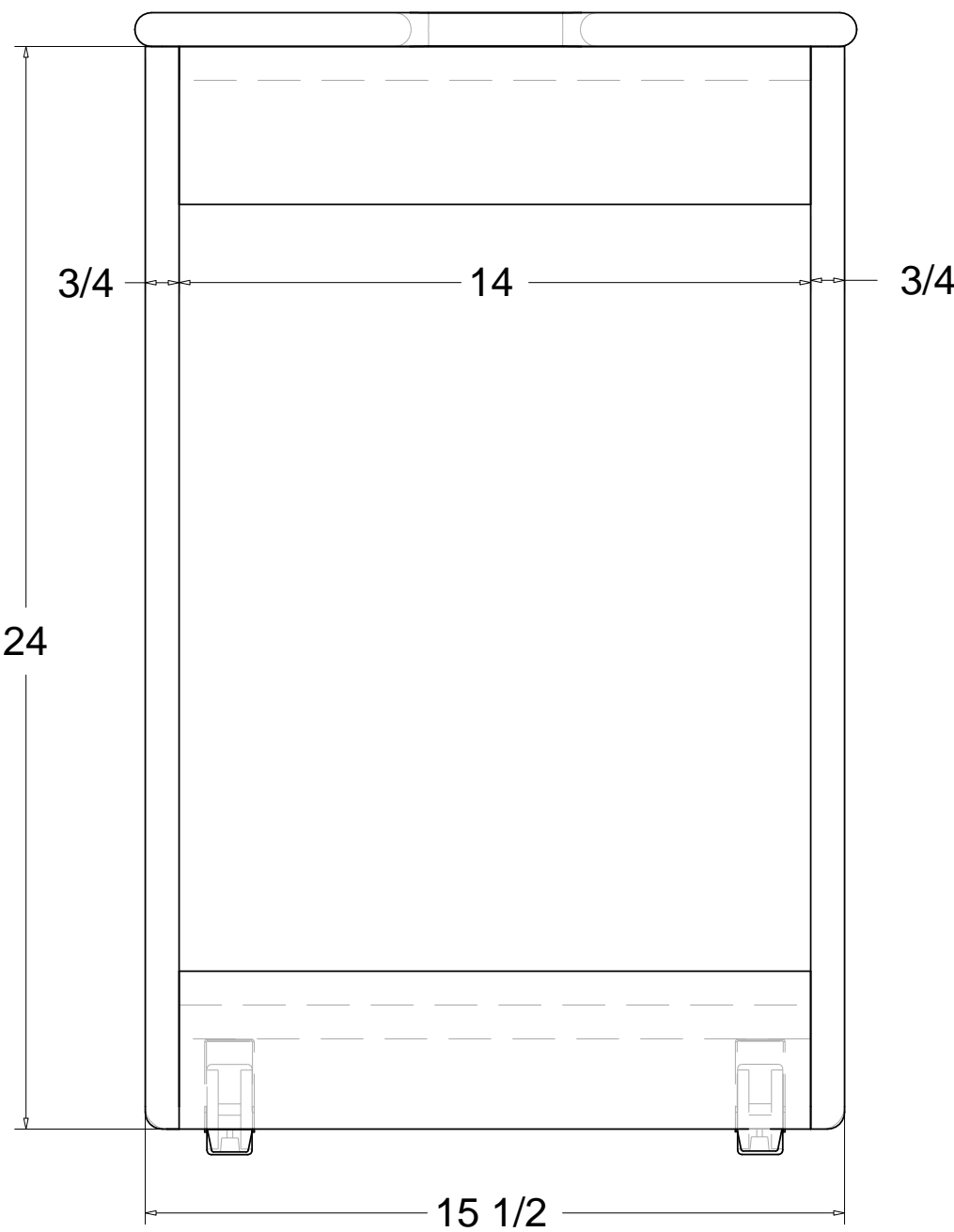
Side View

ASSEMBLY NOTES:

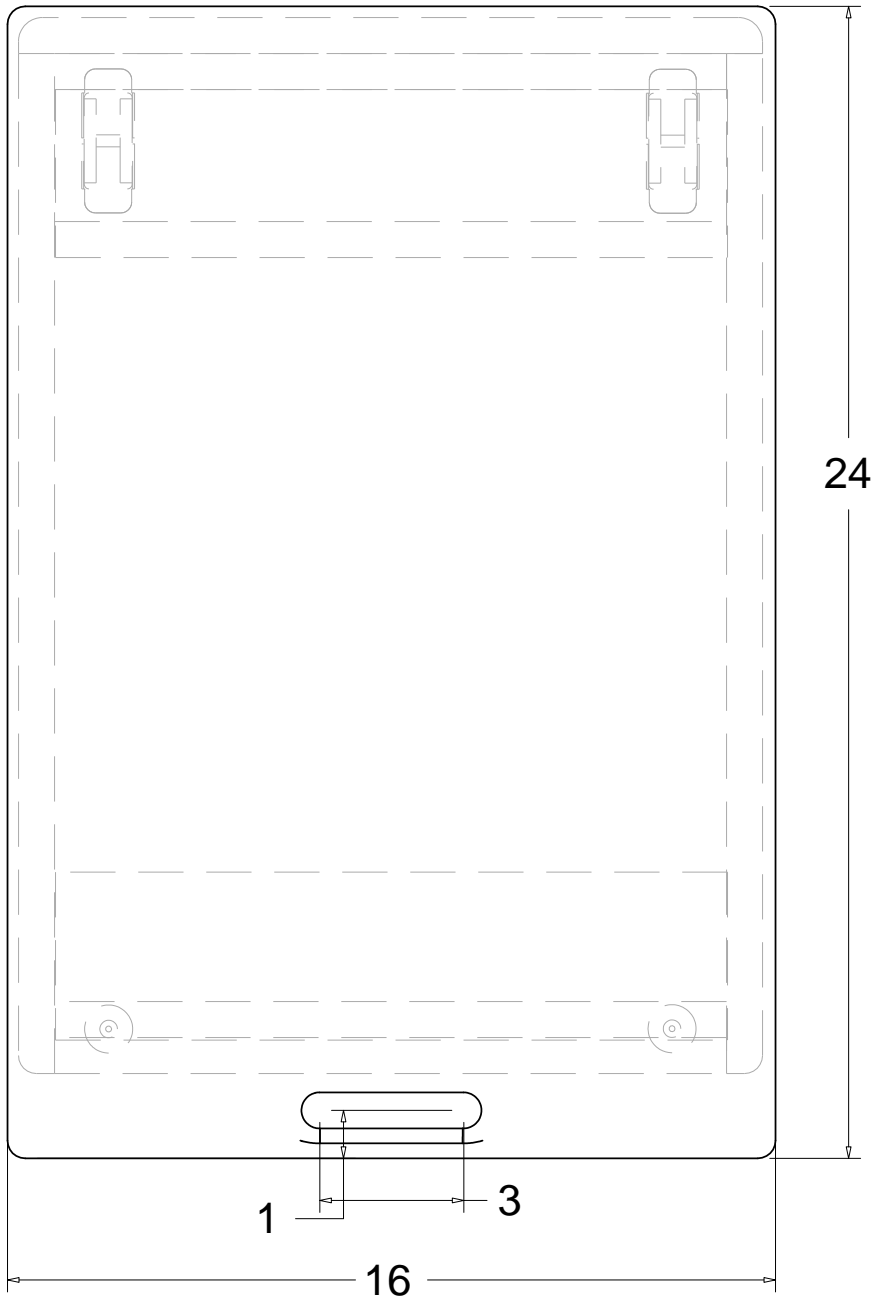
First connect the side panels to each other by doing a "biscuit & glue" with the pine "vertical support" boards ("picture framing" style right-angle clamps are helpful here).

Then, once the basic "box" is assembled, attach the back and the inside bottom panels with glue and air-driven brad nails (makes for fast assembly).

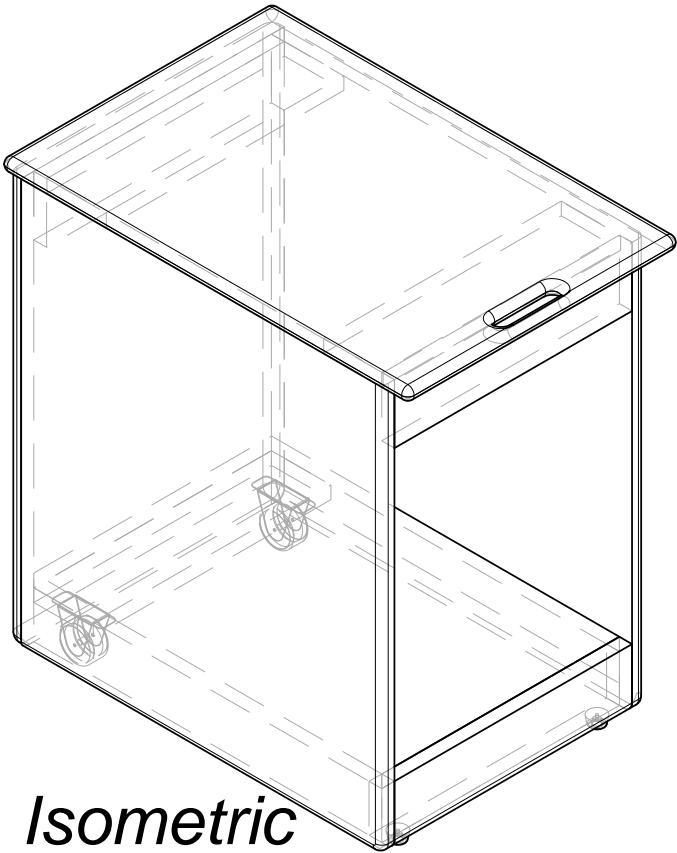
IMPORTANT: If you choose to do roundover's on the edges, then on everything EXCEPT the Top Assembly (see inset at right) this can be most easily accomplished AFTER the unit is fully assembled.



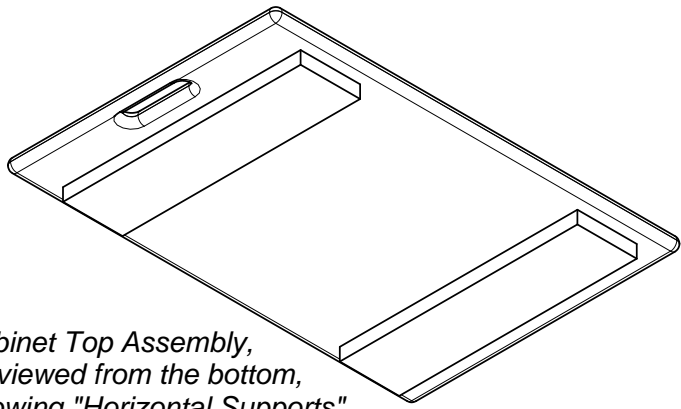
Front View



Top View

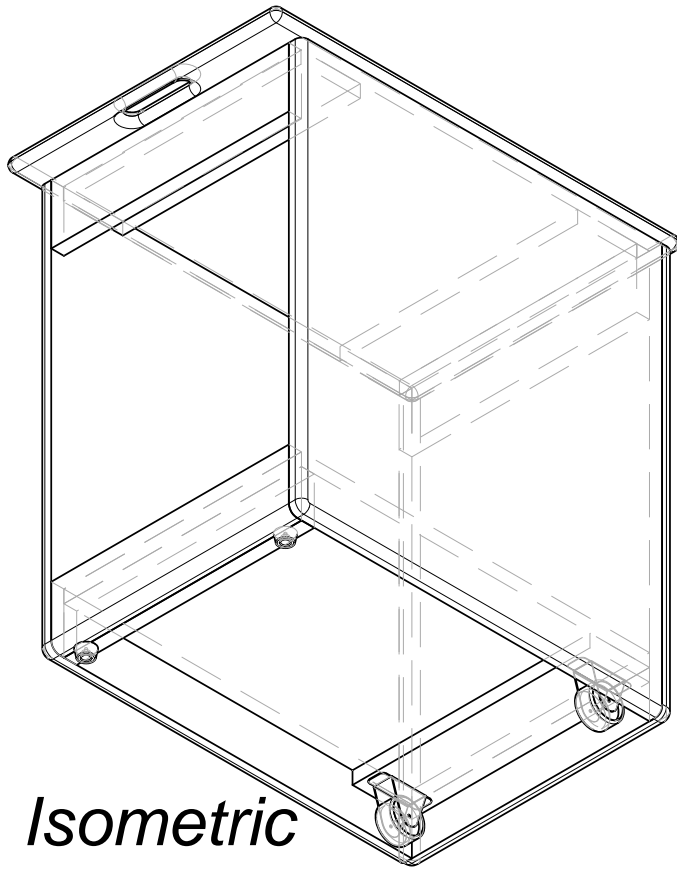


Isometric Viewed From Upper (Top) Left



Cabinet Top Assembly, as viewed from the bottom, showing "Horizontal Supports" used to locate & secure the top to the cabinet.

(Note: By attaching the top to the cabinet with only wood screws -- from the side panels into the Horz Supports -- the top can be easily removed or swapped with other cabinets for tool changes)



Isometric Viewed from Bottom Right